

NAIL FIN INSTALLATION

Max Frame	DP	IMPACT
95 1/4" x 95 1/2" +50/-50		YES

**Installed Fastener Schedule:**

1. Seal flange/frame to substrate.
2. All doors: Install corrosion resistant #9 fasteners no more than 2" from each corner and 8" o.c. through the nail fins on all sides of the door. Fasteners must be long enough to penetrate at least 1" into framing members.
3. Install corrosion resistant #8 x 3" screws through lock keeper into rough opening.
4. Install corrosion resistant #8 x 2" screws through panel track into rough opening.
5. Install corrosion resistant #8 x 2" screws through fixed panel bracket into rough opening.

**General Notes:**

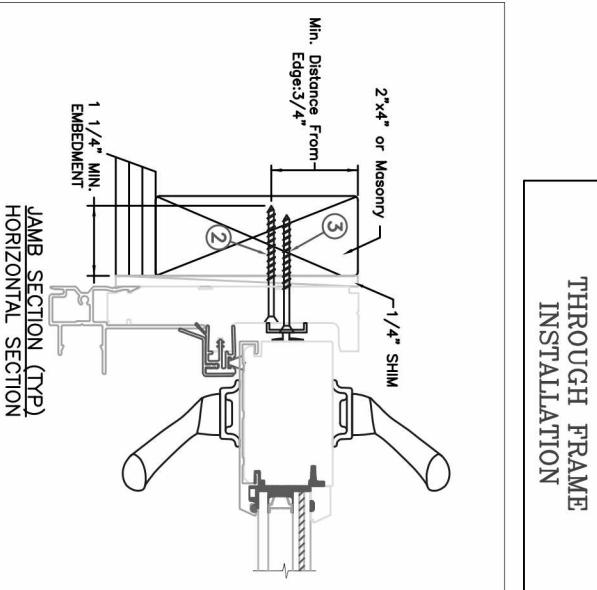
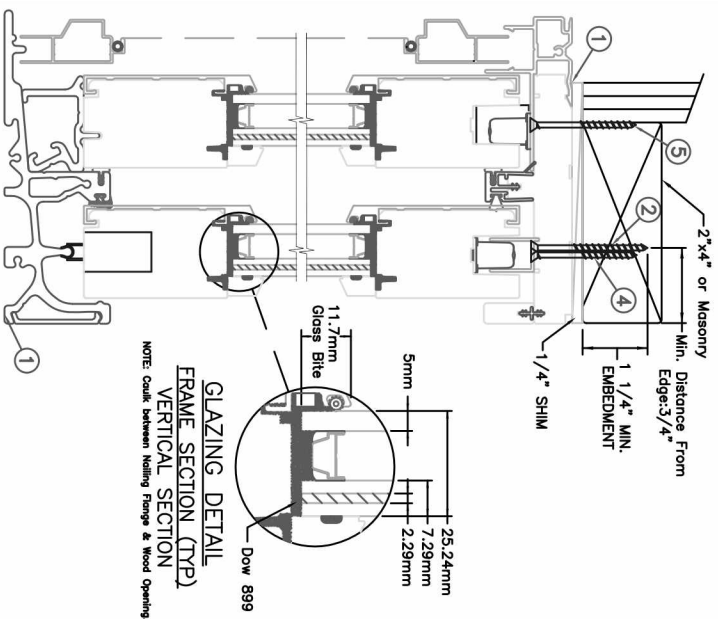
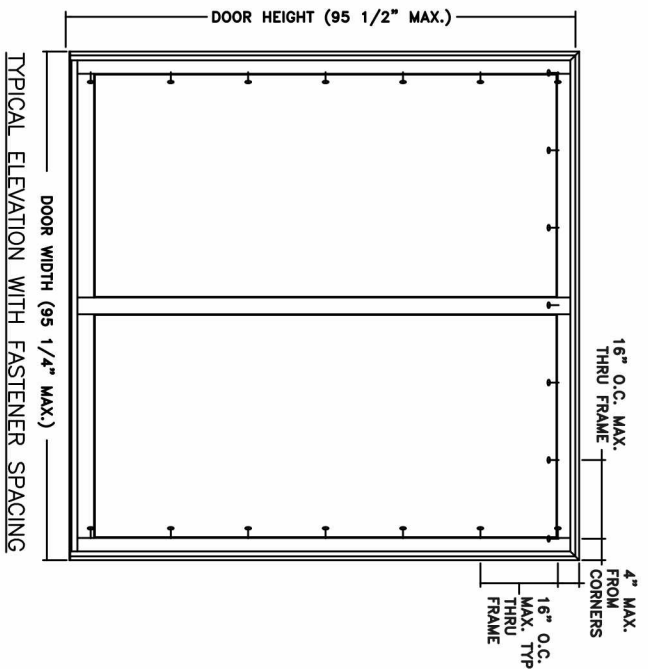
1. The product shown herein is designed, tested and manufactured to comply with the wind load criteria of the adopted International Building Code (IBC), the International Residential Code (IRC), the Florida Building Code (FBC) and the industry standard requirement for the stated conditions.
2. Buck, framing and masonry by others and its responsibility of architect or engineer of record.
3. All glazing shall conform to ASTM E1300.
4. At minimum, glazing shall be 5mm tempered - 12.95mm airspace - 2.5mm annealed - 2.29mm PVB Interlayer by Dupont - 2.5mm annealed glass.

This schedule addresses only the fasteners required to anchor the window to achieve the rated design pressure up to the size limitations noted. It is not intended as a guide to the installation process and does not address the sealing consideration that may arise in different wall conditions. For the complete installation procedure, see the instructions packaged with the door or go to [www.jeld-wen.com](http://www.jeld-wen.com).

**DISCLAIMER:**

This drawing and its contents are confidential and are not to be reproduced or copied in whole or in part or used or disclosed to others except as authorized by JELD-WEN Inc.

PROJECT ENGINEER: --	DATE: 10/02/2015	<p style="text-align: center;"><b>JELD-WEN</b></p> <p style="text-align: center;">3737 Lakeport Blvd Klamath Falls, OR, 97601 Phone: (800) 535-3936</p>	
DRAWN BY: D. Vezo	SCALE: NTS		
CHECKED BY: C. Graetsch	TITLE: Premium Clad Sliding Patio Door Impact	CAD DWG. No.:	REV: 00
APPROVED BY: D. Stokes			SHEET
PART/PROJECT No.:	IDENTIFIER No.:		
D004233	SIW2015-151		



Max Frame	DP	IMPACT
95 1/4" x 95 1/2"	+50/-50	YES

**Installed Fastener Schedule:**

1. Seal flange/frame to substrate.
2. All doors: Install corrosion resistant #9 fasteners no more than 2" from each corner and 8" o.c. through the frame on all sides of the door. Fasteners must be long enough to penetrate at least 1" into framing members.
3. Install corrosion resistant #8 x 3" screws through lock keeper into rough opening.
4. Install corrosion resistant #8 x 2" screws through panel track into rough opening.
5. Install corrosion resistant #8 x 2" screws through fixed panel bracket into rough opening.

**General Notes:**

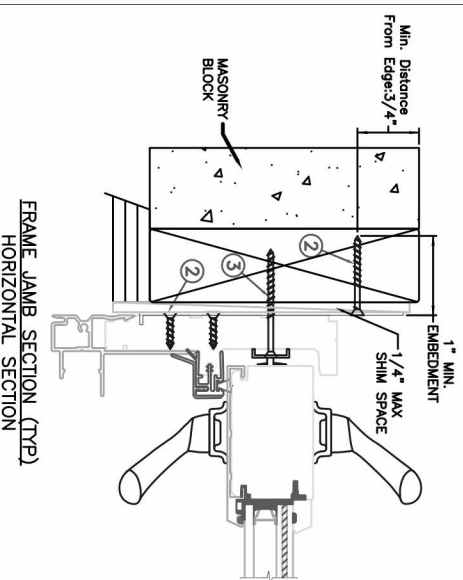
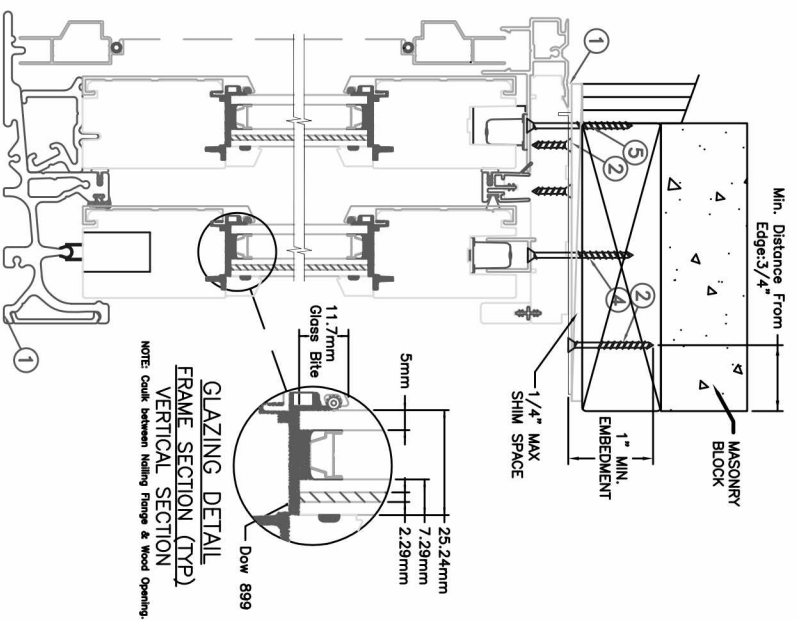
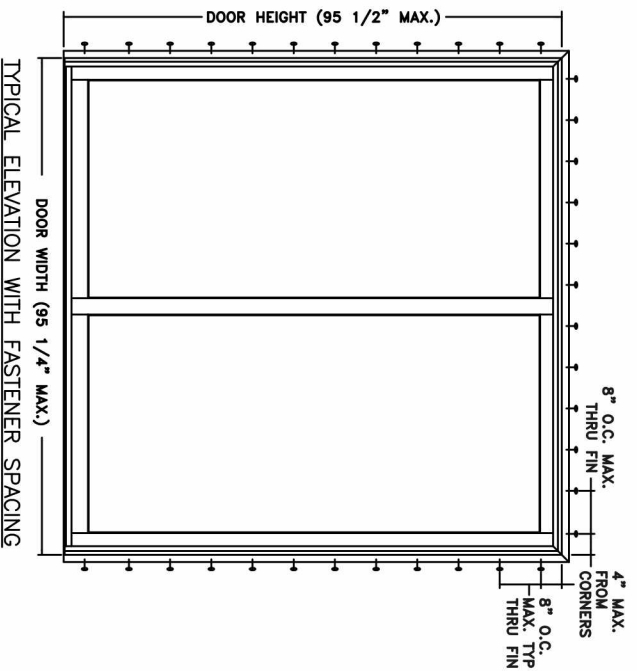
1. The product shown herein is designed, tested and manufactured to comply with the wind load criteria of the adopted International Building Code (IBC), the International Residential Code (IRC), the Florida Building Code (FBC) and the industry standard requirement for the stated conditions.
2. Buck, framing and masonry by others and its responsibility of architect or engineer of record.
3. All glazing shall conform to ASTM E1300.
4. At minimum, glazing shall be 5mm tempered - 12.95mm airspace - 2.5mm annealed - 2.29mm PVB Interlayer by Dupont - 2.5mm annealed glass.

This schedule addresses only the fasteners required to anchor the window to achieve the rated design pressure up to the size limitations noted. It is not intended as a guide to the installation process and does not address the sealing consideration that may arise in different wall conditions. For the complete installation procedure, see the instructions packaged with the door or go to [www.jeld-wen.com](http://www.jeld-wen.com).

**DISCLAIMER:**

This drawing and its contents are confidential and are not to be reproduced or copied in whole or in part or used or disclosed to others except as authorized by JELD-WEN Inc.

PROJECT ENGINEER: --	DATE: 10/02/2015		
DRAWN BY: D. Vezo	SCALE: NTS		
CHECKED BY: C. Graetsch	TITLE: Premium Clad Sliding Patio Door Impact	3737 Lakeport Blvd Klamath Falls, OR, 97601 Phone: (800) 535-3936	
APPROVED BY: D. Stokes		CAD DWG. No.:	REV: 00
PART/PROJECT No.:			SHEET
IDENTIFIER No.:			
PLANT NAME AND LOCATION:			
IDENTIFIER No.:			
IDENTIFIER No.:			



**MASONRY STRAP  
INSTALLATION**

Max Frame	DP	IMPACT
95 1/4" x 95 1/2" +50/-50		YES

**Installed Fastener Schedule:**

1. Seal flange/frame to substrate.
2. Install masonry straps to wood frame using #8 corrosion resistant fasteners no more than 4" from each corner and 16" o.c. along the jambs and head. Bend straps around buck and secure with #8 fastener thru masonry strap into buck. Fasteners must be long enough to penetrate at least 1" into framing members.
3. Install corrosion resistant #8 x 3" screws through lock keeper into rough opening.
4. Install corrosion resistant #8 x 2" screws through panel track into rough opening.
5. Install corrosion resistant #8 x 2" screws through fixed panel bracket into rough opening.

**General Notes:**

1. The product shown herein is designed, tested and manufactured to comply with the wind load criteria of the adopted International Building Code (IBC), the International Residential Code (IRC), the Florida Building Code (FBC) and the industry standard requirement for the stated conditions.
2. Buck, framing and masonry by others and its responsibility of architect or engineer of record.
3. All glazing shall conform to ASTM E1300.
4. At minimum, glazing shall be 5mm tempered - 12.95mm airspace - 2.5mm annealed - 2.29mm PVB Interlayer by Dupont - 2.5mm annealed glass.

This schedule addresses only the fasteners required to anchor the window to achieve the rated design pressure up to the size limitations noted. It is not intended as a guide to the installation process and does not address the sealing consideration that may arise in different wall conditions. For the complete installation procedure, see the instructions packaged with the door or go to [www.jeld-wen.com](http://www.jeld-wen.com).

**DISCLAIMER:**

This drawing and its contents are confidential and are not to be reproduced or copied in whole or in part or used or disclosed to others except as authorized by JELD-WEN Inc.

PROJECT ENGINEER: --	DATE: 10/02/2015		
DRAWN BY: D. Vezo	SCALE: NTS		
CHECKED BY: C. Graetsch	TITLE: Premium Clad Sliding Patio Door Impact	3737 Lakeport Blvd Klamath Falls, OR, 97601 Phone: (800) 535-3936	
APPROVED BY: D. Stokes			
PART/PROJECT No.: D004233	PLANT NAME AND LOCATION:		
IDENTIFIER No.: SJW2015-151	CAD DWG. No.:	REV: 00	SHEET